



Goebel
DESIGN GROUP



**GOEBEL DESIGN GROUP IS A FULL SERVICE
INTERIOR DESIGN FIRM CELEBRATING OVER 105
YEARS OF DESIGN EXCELLENCE.**

**WE HAVE THE DESIGN EXPERTISE AND CREATIVE
INSIGHT TO PROVIDE CLIENTS WITH FUNCTIONAL,
UNIQUE, ENVIRONMENTALLY SOUND AND BUDGET
CONSCIOUS INTERIOR SPACES TAILORED
TO THEIR INDIVIDUAL NEEDS.**

**OUR TEAM SPECIALIZES IN HOSPITALITY,
RESTAURANT, CORPORATE, MEDICAL,
AND SENIOR LIVING COMMUNITIES.**





PACIFIC REGENT BELLEVUE
BELLEVUE, WA

OUR VALUES



EXPERIENCE

We have over 105 years of experience. From design and specification, to purchasing and install, we've got you covered.



HELPFULNESS

We strive to provide great customer service as we work to realize your design needs.



TIMELINESS

Your schedule is of utmost importance to our process. We believe great service and design is delivered on time.



TRANSPARENCY

We pride ourselves on being transparent in our financial dealings with our customers.



CREATIVITY

We embrace a good challenge and enjoy finding unique, effective solutions for your project.



DETERMINATION

We embrace hard work knowing that diligently going the extra mile is essential in creating amazing interiors.

SERVICES



LIGHTING DESIGN

With over twenty-five lighting suppliers to choose from, we can insure you get the perfect fixture - whether it be ready-made or custom.



ART ACQUISITION

We work with art houses across the US and are able to meet any budget and deadline to fully complete your project.



PURCHASING

From design to installation, Goebel Design Group is able to track down, purchase and deliver the goods for your space.



SPECIFICATIONS

Able to purchase on your own? We are happy to give you guidelines and specifications to complete your project.



BID EVALUATIONS

Think you are being ripped off? Let us take a look. With over 105 years of business experience we can help make heads and tails of your bids.



LOGISTICS

Goebel Design Group has decades of experience to oversee your project and ensure everything happens smoothly.



CAD SERVICES

With an in-house CAD Team, we provide schematics for our designs, and coordinate with other construction documents.



SPACE PLANNING

Let us know your needs and objectives; we can make sure your space is utilized to the best of its ability.



CONTRACTING

Once we have completed the design of your project, we can also find the right people to do the work of transforming your space.



COST ESTIMATING

Need an idea for how much your project is going to cost? Let us take a look and use our century of experience to help you determine an adequate budget.



COLORIZATION

We have the eyes for color and design, and can help you realize your space's true color potential.



CUSTOM MILLWORK

Many projects require that special unique touch. We work with wood shops across the nation to create exactly what you need.



DESIGN LIAISON

Communication is key. We make sure everyone that needs to be aware, is. No guessing. No runaround. No BS.

CORE TEAM

OUR SUCCESS IS A TEAM EFFORT.
EACH OF OUR PROJECTS INVOLVE COLLABORATIVE PEER-REVIEW,
REFINING THE FINAL PRODUCT AND ENSURING EVERY DETAIL IS ADDRESSED.
OUR DESIGNERS BRING THEIR UNIQUE EXPERTISE TO THE PROCESS,
ENSURING AN EXCEPTIONAL AND REFINED PRODUCT FOR OUR CLIENTS.



CHAD GOEBEL
PRINCIPAL DESIGNER



TOBY ROBERTS
SENIOR DESIGNER



ELENA LIMON
DESIGNER



MICHAEL MILLER
DESIGNER



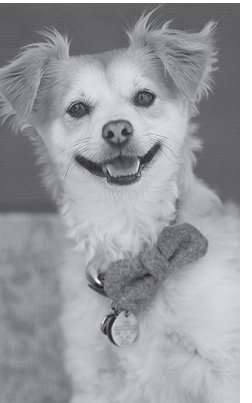
DARCY LANGAN
PROCUREMENT &
INSTALLATION



ALEKSEY GROMOCHENKO
CAD MANAGER



HENRIETTA WONG
CAD OPERATOR



THEODORE
DIRECTOR OF
HUMAN RELATIONS



DEFINE PROJECT & SCOPE

Sit down with one of our talented designers and talk about your project and expectations.



DESIGN & DEVELOPMENT

After we get an idea of what you are looking for, we go to work, pulling together a design that is tailored to your needs.



DESIGN CONCEPT & REVISIONS

Sit down with us as we go over our design for your project. Though feedback and revision our goal is to achieve a remarkable design that meets your needs.

ROUGH EDGE BRONZE G012 RAIL. ALWAYS PLACE ON SIDE WITH THE LONGEST RUN. TO COMPLY WITH IBC 2012. TERMINATE EACH RUN AT DOORS OR RESIDENT ALCOVES. TERMINATE BEFORE FIRE DOORS; SUPPLIED AND INSTALLED BY CONTRACTOR.

2. WALL COVERINGS TO BE PLACED IN BETWEEN RELIEF COLUMNS, AND NOT ON THE COLUMN ITSELF. TYP.

SEE SHEET ID2.3 FOR CONTINUATION

Goebel



PURCHASING & LOGISTICS

Once your concept is complete and approved, we procure all of the inventory, materials and, when necessary, engage qualified contractors to make your projects come to life.



DELIVERY OF GOODS & ONSITE INSTALLATION

After all of the goods are ordered, we secure a local warehouse to coordinate convenient on-site deliveries to your location. We cooperate with site staff to select an appropriate date to install all furnishings.



QUALITY CONTROL

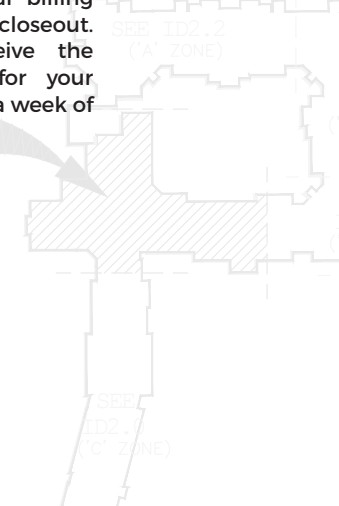
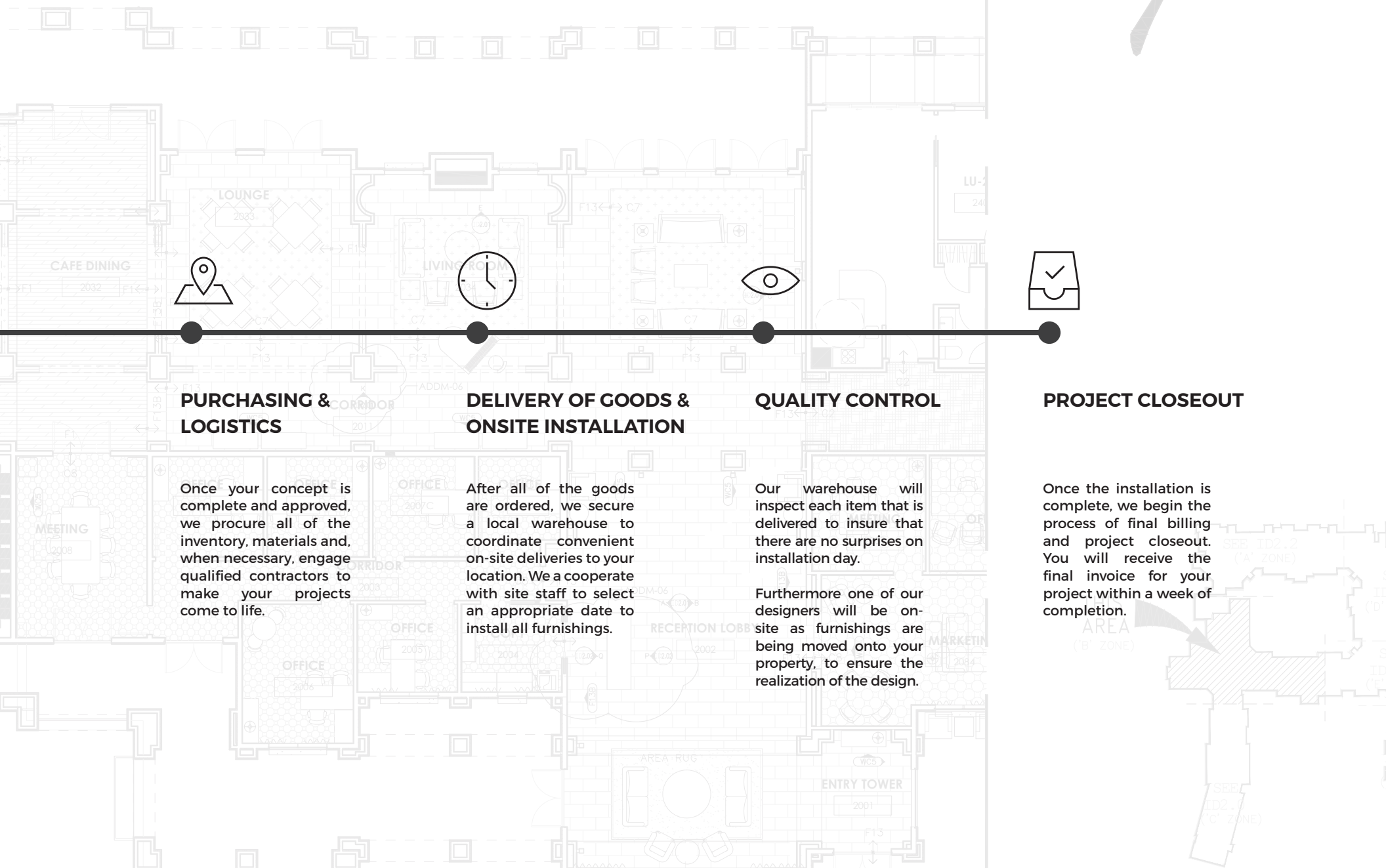
Our warehouse will inspect each item that is delivered to insure that there are no surprises on installation day.

Furthermore one of our designers will be on-site as furnishings are being moved onto your property, to ensure the realization of the design.



PROJECT CLOSEOUT

Once the installation is complete, we begin the process of final billing and project closeout. You will receive the final invoice for your project within a week of completion.





Starting as a drapery work room, on the dusty streets of Tucson, Arizona in the early 1900's, the Goebel name has been a luminary in the design community for over 105 years. We operate our business to the highest of standards, and strive to give our clients a remarkable experience. Our award-winning work has recieved recognition both locally and nationally and we look forward to working with you.

A handwritten signature in black ink, consisting of a large, stylized 'C' followed by a series of loops and a long horizontal stroke.

CHAD GOEBEL
PRINCIPAL DESIGNER

WORKS

BEVERLY HILLS

CARMEL

CHICAGO

DALLAS

DENVER

DETROIT

KALAMAZOO

KANSAS CITY

LIVERMORE

OAKLAND

OKLAHOMA CITY

PALM DESERT

PHOENIX

PORTLAND

RALEIGH

SAN FRANCISCO

SARASOTA

SEATTLE

ST. PETERSBURG

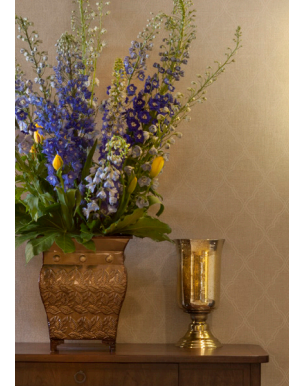
TUCSON



An extraordinary rental retirement community offering Independent Living, Assisted Living and Memory Care in the dynamic city of Frisco.

Client:
Watermark Retirement Communities

PARKVIEW in FRISCO
FRISCO, TX



Pacific Regent Bellevue, located in the heart of downtown Bellevue, Washington is a retirement community offering Independent Living and Rehabilitation & Skilled Nursing on a large but intimate, 17-story senior campus.

Client:
Watermark Retirement Communities

**PACIFIC REGENT BELLEVUE
BELLEVUE, WA**



SAINT HOUSE RUM BAR
TUCSON, AZ

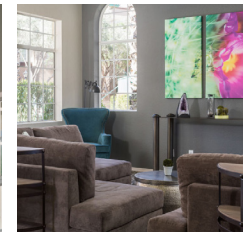
Located in downtown Tucson, AZ, the arid desert heat is pleasantly contrasted by the cool, suave Caribbean flair of Saint House Rum Bar.

Client:
Flowers Group Unlimited

Charming, Luxurious community tucked away against the backdrop of Tucson's Mountains. Offering one, two and three bedroom luxury suites to suit every need,

Client:
Stargate West

STARGATE WEST LUXURY APARTMENTS
TUCSON, AZ





Hawthorn Court's secure, uniquely designed community features both private and semi-private memory care suites. Rustic, ranch-style architecture offers a beautiful setting against the panoramic view of the Phoenix foothills.

Client:
Senior Resource Group



Harvard Square in Denver, Colorado is a retirement community that offers Independent Living and Assisted Living on a large and comfortable senior campus notable for spacious, beautifully landscaped grounds.

Client:
Watermark Retirement Communities





**HACIENDA AT THE RIVER
TUCSON, AZ**



The Hacienda at the River is a 7.5-acre senior living community and rehabilitation center on Tucson's Rillito River. This community fuses landmark integrative therapies and leading edge applied research with the warm desert beauty and hospitality of the Southwest.

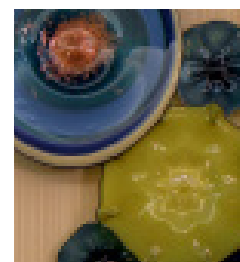
Client:
Watermark Retirement Communities

**FOUNTAINS AT BRONSON PLACE
KALAMAZOO, MI**



The Fountains at Bronson Place, located in Kalamazoo, Michigan is a retirement community offering Independent Living, Assisted Living, Memory Care and Rehabilitation & Skilled Nursing. This senior campus is located on 23 acres of beautifully landscaped grounds and walkways in Kalamazoo's convenient west side.

Client:
Watermark Retirement Communities



WATERMARK AT BEVERLY HILLS
BEVERLY HILLS, CA

The Watermark at Beverly Hills is a luxury boutique Assisted Living community in the heart of Beverly Hills.

Client:
Watermark Retirement Communities

The Fountains at The Carlotta, located in Palm Desert, California is a retirement community offering Independent Living, Assisted Living and Rehabilitation & Skilled Nursing on a large but intimate 20-acre gated senior campus

Client:
Watermark Retirement Communities

**THE FOUNTAINS AT CARLOTTA
PALM DESERT, CA**



**COTTAGES AT CARMEL
CARMEL, CA**

The Cottages of Carmel located in the heart of Carmel, California is a luxury boutique retirement community that offers Assisted Living and Memory Care on a newly built and intimate senior campus on the picturesque central California coast.

Client:
Watermark Retirement Communities

COMING IN 2018

**HACIENDA AT THE CANYON
TUCSON, AZ**

Designed on the traditions of the colonial hacienda, the grounds will feature buildings interconnected by tree-lined pathways and interspersed with patios, shaded courtyards, gardens and orchards with classic Spanish Colonial design that is common to Tucson's architecture.

Client:
*Watermark Retirement
Communities*



CLIENTS

WE HAVE HAD THE HONOR TO SERVE

47 SCOTT
58 DEGREES AND HOLDING
ARIZONA ONCOLOGY
COMMUNITY PARTNERSHIP
OF SOUTHERN ARIZONA
FOX RESTAURANT CONCEPTS

FLOWERS GROUP
UNLIMITED
FROST GELATO SHOPPE
LEVEL BAR & LOUNGE
ORTHOPROS
ROEDIGER HOFF PLC

SCOTT & CO.
SENIOR RESOURCE GROUP
WATERMARK RETIREMENT
COMMUNITIES
ZONA 78 ITALIAN KITCHEN

CONTACT US



PHONE
520.323.6620



ADDRESS
3050 N Country Club
Tucson, AZ 85716



E-MAIL
info@goebeldesigngroup.com



520.323.6620

WWW.GOEBELDESIGNGROUP.COM